

PERMIT AREA
Scale: 1"=500'
Contour Interval = 20'

Base Map - Good Springs, Alabama
United States Geological Survey
Quadrangle Map.

NATURE OF REVISION R-18

- Transfer 17 Mining Acres From Increment No. 4 To P-3833
- Transfer 18 Mining Acres From Increment No. 5 To Increment No. 4
- Transfer 14 Mining Acres From Increment No. 3 To Increment No. 4
- Request To Update The Operations Plan Cut Sequence Numbers

NATURE OF REVISION R-19

- Correct Acreage in Increment No. 5 from 43 Acres to 28 Acres.
- Transfer 28 Mining Acres From Increment No. 5 to Increment No. 3

NATURE OF REVISION R-20

- Add 3.0 Mining Acres to Increment No. 3
- Request To Extend The Tapsal Variance To Cover The Newly Added Area.

NATURE OF REVISION R-21

- Add 6.0 Mining Acres to Increment No. 3
- Add 3.0 Mining Acres for Access to Increment No. 6
- Request To Extend The Tapsal Variance To Cover The Newly Added Area.

NATURE OF REVISION R-22

- Add 6.0 Mining Acres to Increment No. 3
- Transfer 5.0 Mining Acres from Increment No. 3 to Increment No. 2
- Transfer 14.0 Incidental Acres from Increment No. 6 to Increment No. 2
- Transfer 22.0 Mining Acres from Increment No. 2 to Increment No. 4
- Transfer 23.0 Mining Acres from Increment No. 4 to Increment No. 2
- Request To Extend an Ancillary Road Located within the SE/NE of Section 36.
- Request To Extend The Tapsal Variance To Cover The Newly Added Area
- Request To Increase The Grading Waiver from 20 Acres to 50 Acres on Increments No. 3 and No. 4.

NATURE OF REVISION R-23

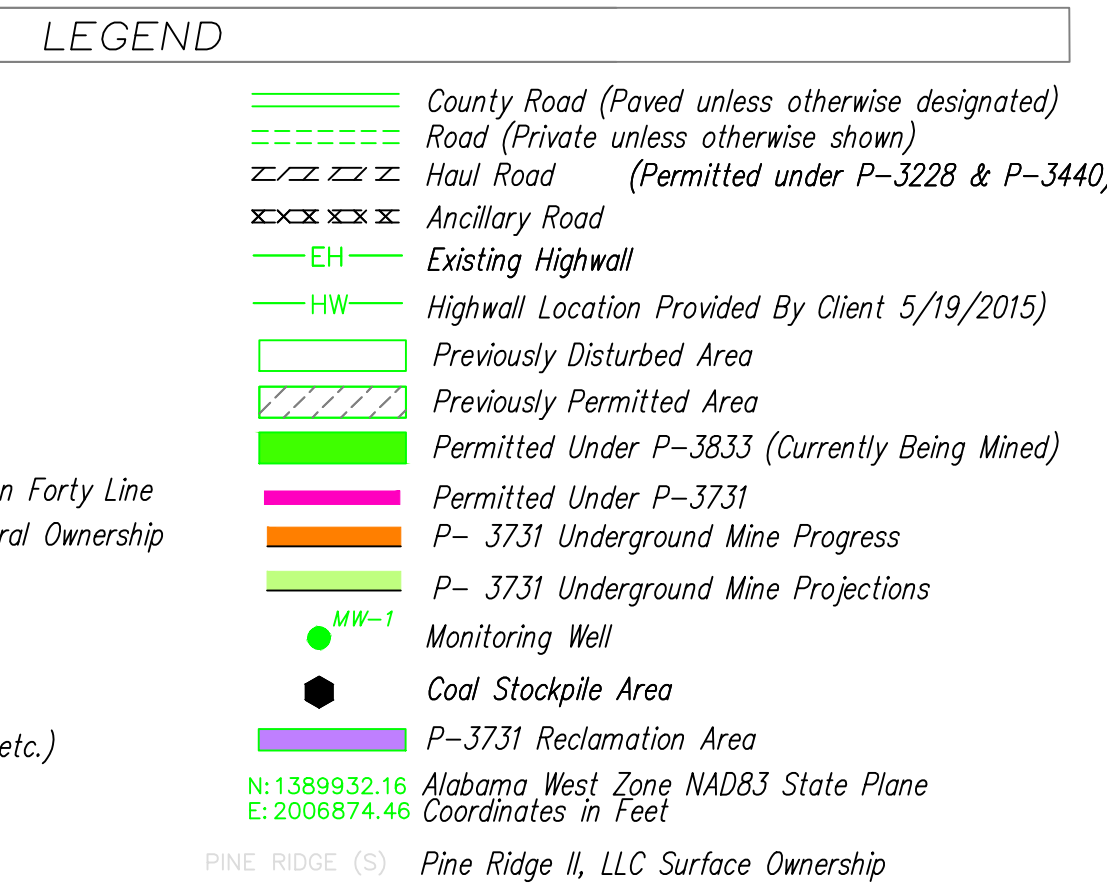
- Update the Operation Plan to Allow Spoil Material to be Transported and Used on P-3731 as Reclamation Cover Material.

NATURE OF REVISION R-24

- Add 2.0 Mining Acres to Increment No. 7
- Request To Extend The Tapsal Variance To Cover The Newly Added Area.

NATURE OF REVISION R-8

- Add 2.0 Mining Acres to Increment No. 3
- Transfer 13.0 Mining Acres from Increment No. 5 to Increment No. 3
- Transfer 2.0 Mining Acres from Increment No. 2 to Increment No. 3
- Transfer 2.0 Mining Acres from Increment No. 5 to Increment No. 4
- Transfer 1.0 Mining Acres from Increment No. 5 to Increment No. 6 for Access
- Request To Update The Operations Plan
- Request To Extend The Tapsal Variance to cover the Newly Added Area



NATURE OF REVISION R-9

- Delete 2.0 Bonded & Undisturbed Incidental Acres (A portion of Primary Road IP) from Increment No. 6
- Transfer 2.0 Mining Acres from Increment No. 1 to Increment No. 6 for a portion of an Ancillary Road
- Add 0.40 Incidental Acres to Increment No. 6 for a portion of an Ancillary Road (No acreage change)

NATURE OF REVISION R-10

- Transfer 4.0 Mining Acres from Increment No. 2 to Increment No. 3
- Transfer 3.0 Mining Acres from Increment No. 5 to Increment No. 3
- Transfer 10.0 Mining Acres from Increment No. 5 to Increment No. 3
- Add 3.0 Mining Acres to Increment No. 3
- Add 22.0 Mining Acres to Increment No. 3
- Request to Update the Operations Plan
- Request to Extend the Tapsal Variance to cover the newly added area.

NATURE OF REVISION R-11

- Transfer 4.0 Mining Acres from Increment No. 1 to Increment No. 3

NATURE OF REVISION R-12

- Transfer 13.0 Mining Acres from Increment No. 5 to Increment No. 4
- Transfer 1.0 Incidental Acre from Increment No. 6 to Increment No. 4
- Update the Operations Plan
- Request to Modify Existing Primary Road IP (No Acreage Change)

NATURE OF REVISION R-13

- Add 23.0 mining acres to Increment 3
- Add 1.0 incidental acre to increment 3 for an access road
- Transfer 1.0 mining acres from increment No. 5 to increment No. 3
- Transfer 8.0 mining acres from increment No. 5 to increment No. 3
- Transfer 5.0 mining acres from increment No. 1 to increment No. 3
- Request to Update the Operations Plan
- Request to Extend the Tapsal Variance to cover the newly added area
- Update the Geology Section to include a Hydro-Geo Map, Cross-Section and Hydrologic Monitoring Plan Map

NATURE OF REVISION R-14

- Transfer 21.0 mining acres from increment No. 5 to increment No. 4
- Transfer 5.0 incidental acres from increment No. 6 to increment No. 4 for Mining Area
- Transfer 0.20 acres from increment No. 5 to increment No. 4 (No Acreage Change)
- Transfer 2.0 Mining acres from increment No. 3 to increment No. 2
- Request to Update the Operations Plan

NATURE OF REVISION R-15

- Add 1.0 mining and incidental acres to increment No. 3
- Add 28 mining acres to increment No. 5
- Request to Update the Operations Plan
- Request to Extend the Tapsal Variance to cover the newly added area.

NATURE OF REVISION R-16

- Transfer 23 Mining Acres From Increment No. 5 to Increment No. 4
- Transfer 22 Mining Acres from Increment No. 5 to Increment No. 3
- Add 1 Acre For Haul Road 4P Road Added To Increment No. 6
- Request To Update The Operations Plan
- Request To Add Ancillary Road
- Request For Delay In Highway Reclamation Within increment No. 4 Along North West End Of Cuts
- Request For Delay In Highway Reclamation Within increment No. 3 Along South End Of Cuts

NATURE OF REVISION R-17

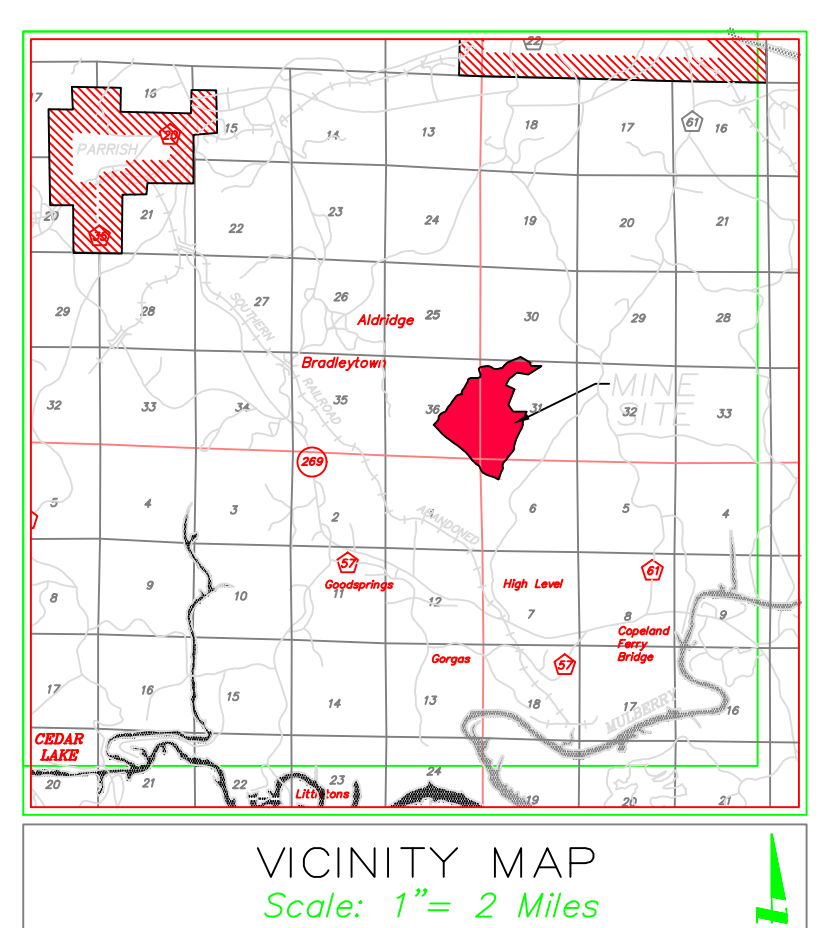
- Transfer 12 Mining Acres From Increment No. 5 to Increment No. 4
- Request To Update The Operations Plan Cut Sequence Numbers
- Update Hydrologic Monitoring Plan

POST R-23 BOND LEGEND

- Area Permitted Under increment No. 1, 41 Acres
- 41 Acres Mining Area (Phase II Bond Release)
- Area Permitted Under increment No. 2, 84 Acres
- 84 Acres Mining Area
- Area Permitted Under increment No. 3, 223 Acres
- 223 Acres Mining Area
- Area Permitted Under increment No. 4, 172 Acres
- 172 Acres Mining Area
- Area Permitted Under increment No. 5, 9 Acres
- 9 Acres Mining Area
- Area Permitted Under increment No. 6, 55 Acres
- 15 Acres Basins 022E, 022A, 035, 037, 038
- Rock Check Dam 010E, Drainage Courses & Access
- 30 Acres Haulroads
- 4 Acres Coal Stockpile & Equipment Storage Area
- 5 Acres Access Road
- Total Permitted Area..... Acres 534

POST R-24 BOND LEGEND

- Area Permitted Under increment No. 1, 9 Acres
- 9 Acres Mining Area (Phase II Bond Release)
- Area Permitted Under increment No. 2, 84 Acres
- 84 Acres Mining Area
- Area Permitted Under increment No. 3, 223 Acres
- 223 Acres Mining Area
- Area Permitted Under increment No. 4, 172 Acres
- 172 Acres Mining Area
- Area Permitted Under increment No. 5, 9 Acres
- 9 Acres Mining Area
- Area Permitted Under increment No. 6, 55 Acres
- 15 Acres Basins 022E, 022A, 035, 037, 038
- Rock Check Dam 010E, Drainage Courses & Access
- 30 Acres Haulroads
- 4 Acres Coal Stockpile & Equipment Storage Area
- 5 Acres Access Road
- Total Permitted Area..... Acres 536



NATURE OF REVISION R-25

- Deleted 19 Mining Acres from increment No. 3 Due to Double Permit and Bonding under P-3731 R-23
- Deleted 4 Incidental Acres from increment No. 6 Due to Double Permit and Bonding under P-3731 R-23
- Deleted increment No. 7 Due to Double Permit and Bonding under P-3731 R-23

POST R-25 BOND LEGEND

- Area Permitted Under increment No. 1, 0 Acres
- 0 Acres Mining Area (Phase II Bond Release)
- Area Permitted Under increment No. 2, 84 Acres
- 84 Acres Mining Area
- Area Permitted Under increment No. 3, 184 Acres
- 184 Acres Mining Area
- Area Permitted Under increment No. 4, 172 Acres
- 172 Acres Mining Area
- Area Permitted Under increment No. 5, 9 Acres
- 9 Acres Mining Area
- Area Permitted Under increment No. 6, 51 Acres
- 11 Acres Basins 022E, 022A, 035, 037, 038
- Rock Check Dam 010E, Drainage Courses & Access
- 30 Acres Haulroads
- 4 Acres Coal Stockpile & Equipment Storage Area
- 5 Acres Access Road
- Total Permitted Area..... Acres 489

NATURE OF REVISION R-26

- Delete 2 Acres from P-3808 increment 4 (Transferred to P-3833 increment 5)
- Transfer 3 Acres for Drainage Courses from increment 2 to increment 6

POST R-26 BOND LEGEND

- Area Permitted Under increment No. 1, 0 Acres
- 0 Acres Mining Area (Phase II Bond Release)
- Area Permitted Under increment No. 2, 81 Acres
- 81 Acres Mining Area
- Area Permitted Under increment No. 3, 184 Acres
- 184 Acres Mining Area
- Area Permitted Under increment No. 4, 172 Acres
- 172 Acres Mining Area
- Area Permitted Under increment No. 5, 9 Acres
- 9 Acres Mining Area
- Area Permitted Under increment No. 6, 54 Acres
- 14 Acres Basins 022E, 022A, 035, 037, 038
- Rock Check Dam 010E, Drainage Courses & Access
- 30 Acres Haulroads
- 4 Acres Coal Stockpile & Equipment Storage Area
- 5 Acres Access Road
- Total Permitted Area..... Acres 489

NATURE OF REVISION R-27

- Reevaluate Basins 022, 022A, and Rock Dam 010
- Modify Basin 022 Design Plan
- Update General Plan

NATURE OF REVISION R-28

- Update the Ownership Map
- Change Past Mining land use of Sediment Basins from Temporary to Permanent Water Impoundments for Fish and Wildlife Habitat

POST R-28 BOND LEGEND

- Area Permitted Under increment No. 1, 0 Acres
- 0 Acres Mining Area (Phase II Bond Release)
- Area Permitted Under increment No. 2, 81 Acres
- 81 Acres Mining Area (Phase II Bond Release)
- Area Permitted Under increment No. 3, 184 Acres
- 184 Acres Mining Area (Phase II Bond Release)
- Area Permitted Under increment No. 4, 170 Acres
- 170 Acres Mining Area (Phase II Bond Release)
- Area Permitted Under increment No. 5, 9 Acres
- 9 Acres Mining Area
- Area Permitted Under increment No. 6, 54 Acres
- 14 Acres Basins 022E, 022A, 035, 037, 038
- Rock Check Dam 010E, Drainage Courses & Access
- 30 Acres Haulroads
- 4 Acres Coal Stockpile & Equipment Storage Area
- 5 Acres Access Road
- Total Permitted Area..... Acres 489

PERMIT AND VICINITY MAP
CENTENNIAL NATURAL RESOURCES LLC
JAP CREEK MINE
P-3808
REVISION R-28
Sec. 36 T15S, R7W
Part of Sec. 30 & 31 T15S, R6W
Part of Sec. 6 T16S, R7W
Walker County, Alabama

NO.	DATE	NATURE OF REVISION
1		
2		
3		
4		
5		
6		

Date: June 3, 2013

P3808R28.dwg

I, Robert S. Roberts, a Registered Professional Engineer, hereby certify the foregoing to be a true and correct map to the best of my knowledge, information, and belief.

Robert S. Roberts, PE
AL Registration No. 32806

Date